

The Prince George's Post



A COMMUNITY NEWSPAPER FOR PRINCE GEORGE'S COUNTY Since 1932

Vol. 84, No. 50 December 15 — December 21, 2016 Prince George's County, Maryland Newspaper of Record Phone: 301-627-0900 25 cents



PHOTO COURTESY R. JOSHUA REYNOLDS

Pete Goodson (far left) and Skylar Wyche (center) facilitate discussion about re-entry assistance.

Economic Development Corporation's 'Angels' Change Lives for Returning Citizens

One-Stop Career Center Agents of Hope Provide Resources to Help Residents Remove Obstacles in Their Lives

By R. JOSHUA REYNOLDS
PGCEDC

BLADENSBURG, MD—On December 2, Prince George's County Economic Development Corporation (EDC) Workforce Services Division team kicked off their workshop tour of Prince George's County spreading the news about the resources and

help that are available for returning citizens. The workshop facilitated by Development Coordinator Pete Goodson and Career Consultant Skylar Wyche took place at the Bladensburg Town Hall and introduced County residents who have served their time and are ready to move on to tools that help them embark on a successful job search.

"The re-entry program has impacted a lot of individuals and families," said Goodson. "A lot of people come to the program with a desire to change and have the right attitude and want a better life. I have been able to be an instrument, along with other folks at the One-Stop, to help facilitate that process. There are so many people returning

home who need help and we are agents of hope. I have the opportunity to sit down with someone and provide some hope along with great resources. This work is more than just a job. It's a calling and I'm grateful that I am able to help men and women

See **WORKSHOP** Page A5

Council Approves Legislation Addressing Public Safety, Economic Development and Minimum Wage

By PRESS OFFICER
PG County Council

UPPER MARLBORO, MD—The Prince George's County Council, during the final session for Legislative Year 2016 on Tuesday, November 15, held 31 public hearings, and enacted several zoning bills and legislation addressing a wide range of issues including, but not limited to, public safety and health; economic development and opportunity; and minimum wage.

A trio of bills were passed as a part of Council Member Deni Taveras' Quality of Life Legislative Package. Council Bill 59-2016 expands and clarifies laws governing the use of an apartment for drug activity or prostitution. Under the legislation, landlords, owners, management staff, or tenants could be held liable if their property is used for drug activity or prostitution, including

See **FINAL SESSION** Page A3

Circulator Bus Program Launches at National Harbor

Shuttle Buses Circulate Between National Harbor, Gaylord National, Tanger Outlets and MGM

By PRESS OFFICER
Bendure Communications, Inc.

NATIONAL HARBOR, MD—Dec. 6, 2016, An internal circulator bus program at National Harbor has launched and is available for use by the public. Three shuttles will run on a circuit between National Harbor, Gaylord National, Tanger Outlets and MGM with service seven days a week, 365 days a year. Hours of operation are 11 a.m. to 4 a.m. and the cost is \$5 for an all-day pass. Passes may be purchased via cash, credit card or pre-purchased vouchers

available online or from the Mariner Garage Circulator Shuttle Management Office or at approved National Harbor retailers (visit www.NationalHarbor.com to find retailers.)

The circulator is operated by Reston Limousine at a cost of \$1 million annually. In addition to the cost of the circulator, National Harbor and its partners have invested more than \$10 million in road improvements to improve traffic flow in advance of the MGM National Harbor

See **SHUTTLE BUS** Page A3

Free Holiday Cab Rides Offered Throughout PG County to Prevent Drunk Driving

By PRESS OFFICER
WRAP

UPPER MARLBORO, MD—Combating that holiday period which the National Highway Traffic Safety Administration says is a "dangerous time to be on the road due to a high number of drunk drivers behind the wheel," a local nonprofit organization announced today that free cab rides will be offered to would-be drunk drivers throughout Prince George's County, Maryland.

Offered by the nonprofit Washington Regional Alcohol Program (WRAP), the annual Holiday SoberRide® program will operate between 10:00 pm and 6:00 am each evening between Friday, December 16, 2016 and Sunday, January 1, 2017 as a way to keep local roads safe from impaired drivers during this traditionally high-risk, holiday period.

During the evening hours, between December 16th and Jan-

uary 1st, Washington-metropolitan area residents celebrating with alcohol may call the toll-free SoberRide® phone number 1-800-200-TAXI and be afforded a no-cost (up to \$ 30 fare), safe way home. (AT&T wireless users can dial #WRAP for the same service.)

"Last December, nearly 1,500 (1,456) Greater Washington residents did the right thing and availed themselves of this lifesaving service rather than possibly driving home impaired," said Kurt Gregory Erickson, WRAP's President. "For SoberRide's hours of operation during just last New Year's Eve, alone, such ridership (580) translated into the removal of a would-be drunk driver from our shared roadways every 49-seconds."

SoberRide® is offered in the District of Columbia; throughout the Maryland counties of

See **FREE CAB** Page A5

PG County Building Dynasty With China

"We're Serious About Doing Business," Says Coleman

By LORI C. VALENTINE
PGCEDC

WASHINGTON, D.C.—On November 22nd, EDC President and CEO Jim Coleman gave the keynote address to more than 30 high level Chinese business leaders during a seminar hosted by the Greater Washington China Investment Center in Washington, D.C. This invitation only event, requested by the China General Chamber of Commerce in conjunction with the U.S. China Joint Commission on Commerce and Trade, centered on the risks and opportunities of investing in the United States. As Prince George's County is known throughout the Washington Metropolitan Area for its booming investment climate, Mr. Coleman highlighted the plethora of development projects that are sprouting up all over the County and how each member of the delegation can become a part of this exciting time in Maryland's history.

"Prince George's County is serious about doing business," said Coleman. "Our County Ex-



PHOTO COURTESY LORI C. VALENTINE

EDC President and CEO Jim Coleman (center) with members Greater Washington China Investment Center and visiting Chinese Delegation.

ecutive, Rushern L. Baker, III, is completely committed to building strong relationships with China as well as several other targeted, high growth countries. With our rapidly growing economy and more than \$10 billion in the pipeline for new construction over the next 18 months, it is important for us to build bridges with our international neighbors that can

help transform investment and trade in Prince George's County; making it the true Gateway to the U.S. Market."

Mr. Coleman shared County Executive Baker's International Business plan, which the EDC is executing through targeted business mission trips, advertising its County-wide foreign trade zone designation, and cultivating relationships with tar-

geted countries through mutual briefings with foreign embassies. Coleman also announced that County Executive Baker will be leading a business mission to Korea and China in April 2017. Several of the delegation members expressed interest in meeting with the mis-

See **CHINA** Page A5

INSIDE

Maryland DHCD Celebrates Designation of Over 100 Sustainable Communities

As part of the program, local officials evaluate their own community's strengths and weaknesses, identify implementation partners, and strive for tangible goals for the long-term vitality of the places many Marylanders live and work.

Community, Page A3

Stay Strong: Fight Back

The last few weeks have been a very difficult time for so many of us and we may want to give up the struggle to ensure every child an equal chance to live and learn and grow up safely in our boastfully rich and militarily powerful but spiritually anemic nation that lets children be our poorest group of Americans.

Commentary, Page A4

USDA Grants \$20.2 Million for Food and Forestry Research and Development Projects

Since 2009, USDA has invested \$19 billion in research and development touching the lives of all Americans from farms to the kitchen table and from the air we breathe to the energy that powers our country.

Business, Page A5

Movie Review: Hacksaw Ridge

Hacksaw Ridge is the extraordinary true story of Desmond Doss who, in Okinawa during the bloodiest battle of WWII, saved 75 men without firing or carrying a gun. He was the only American soldier in WWII to fight on the front lines without a weapon, as he believed that while the war was justified, killing was nevertheless wrong.

Out on the Town, Page A6

Earth Talk

Dear EarthTalk:

Driving around and around city blocks looking for parking seems like a colossal waste of fuel (and time). Is anyone working on ways to reduce this extra traffic and emissions burden?

—Bernice Mickelson,
New York, NY

Features, Page A7

Towns and NEIGHBORS

In and Around Morningside-Skyline

by Mary McHale 301 735 3451

Darnall's Chance invites you to a *Hansel & Gretel* Tea Party

Visit Darnall's Chance Museum when it's decorated like a gingerbread house. Listen to the story of *Hansel and Gretel*, enjoy tea and dessert, and participate in a holiday craft activity on Saturday, Dec. 17, at 2 p.m. (I apologize for having the wrong date when I ran this in an earlier column.)

For ages 5 years and older. Capacity is limited; reservation and payment required in advance: resident, \$17, non-resident, \$22. Call 301-952-8010 or go to history.pgparcs.com.

Darnall's Chance House is at 14800 Governor Oden Bowie Drive in Upper Marlboro, on a hill overlooking School House Pond.

People

Happy anniversary to the Daughters of St. Anne on their 150th anniversary. The congregation was founded by Mother Rosa Gattorno in Piacenza, Italy, on Dec. 8, 1866, the Feast of the Immaculate Conception, with a mandate to work with the poor and sick. They now serve in a number of countries around the world, but the only Sisters in the United States live in St. Philip's Parish, Camp Springs. One of their convents is just behind my home in Skyline.

Condolences to Rev. Rory Conley on the death of his brother Mark Conley, who died Sept. 19. Father Conley officiated at the Mass of Christian Burial on Nov. 5 at St. Mary's Church in Bryantown.

Changing landscape

Maryland's Gold Star Families Memorial was unveiled on Nov. 11 just up the hill from the World War II and Pearl Harbor memorials overlooking Annapolis, across the Severn River by the U.S. Naval Academy Bridge. It is "a tribute to those who have lost and sacrificed a loved one for the nation's freedom."

Heart Care of Southern Maryland is moving from Hospital Drive in Clinton to 7704 Metapeake Business Drive in Brandywine Crossings in January or February. This includes Doctors George Bren, Roy Leiboff and Sunil K. Nachnani.

The Washington Monument is closed again and will probably remain so for the next 2 1/2 years, according to the National Park Service.

Christmas

Sunday, Dec. 18: A Christmas Saintry Tea at Loyola on the Potomac, in Faulkner. The Tea will feature delicious assorted finger sandwiches and dessert and there'll be vendors and raffles. Admission is \$20. Hours: 3:00 to 5 p.m.

Sunday, Dec. 25: Dr. Kelvin M. McCune, Pastor, and Suitland Road Baptist Church, 6412 Suitland Road, invite you to their Christmas Day service at 9 a.m.

When you drive Allentown Road near Andrews' Chapel One, be sure to admire the Menorah and the Christmas Tree. The lights were turned on the night of Dec. 1.

Morningside Memories

Some of you will remember (and still miss) Morningside's traditions established in the 1950s and '60s. For example:

In December 1959 the annual Tree Lighting, at the Maple and Randolph Road circle, was celebrated with carols and Santa. And the Women's Civic Group sponsored the annual House Decorating contest. Cash prizes for the top three Christmas houses were \$15, \$10 and \$7.50.

Then in early January 1960, the annual Twelfth Night Tree Burning Ceremony was held in a vacant lot at Lombardy and Suitland Road. Leo Abernethy was master of ceremonies. (Lombardy Road eventually became the other half of Poplar.)

Former District Heights resident dies in Canada

Lawrence C. "Larry" Rohan, 73, formerly of District Heights, died Nov. 24 in Vancouver, British Columbia. He was a graduate of Mount Calvary School and of Archbishop Carroll High School where he was a three-letter sportsman, each year from 1958 to 1964. He served in the Air Force, was a Vietnam veteran and graduated from the University of Maryland.

While in service, he met his Canadian wife, Marilyn. They

raised their family in Vancouver where he worked with the Insurance Corporation of BC. He was also a pro-football referee and supervisor with the Canadian Football League (while remaining a loyal Redskin fan).

He was predeceased by his parents, Arthur and Mary Rohan, and sister Judith Mammano. Survivors include his wife Marilyn; sons Christopher, Scott and Matthew; grandsons Jacob and Zachary; and brothers Francis, Charles, Alexis, James, John and Thomas. His funeral was in Vancouver, but a remembrance service will later be held locally, maybe in District Heights from which he hailed.

May they rest in peace

Z'ane Breana Davis-Smith, 19, a 2015 cum laude graduate of McNamara High School, died Nov. 3. She was majoring in theater arts at American University. Survivors include her parents, Carla Davis and McArthur Smith; stepsiblings Tamia and Wayne; and several grandparents and great-grandparents. Services were at Fort Lincoln Funeral Home. She would have turned 20 on December 27.

Rose Elizabeth "Betty" Smith, 88, longtime resident of Temple Hills who worked for 28 years in the office of Dr. Bernard Peacock, died Nov. 15 in Leesburg, Va. At Holy Family Church in Hillcrest Heights, she organized fashion shows, directed variety programs and created musical numbers for the Sodality. In recent years she was a member of St. Joseph's Church in Hemdon, Va.

Milestones

Happy birthday to Linda Gyskewicz, Dec. 15; Stacie Smith and Erin Nicole Brown-Sandoval, Dec. 16; Bradley Wade and David Williams III, Dec. 17; Charlene Baker and Paul Ratliff, Dec. 18; my grandson Michael Gallegos, Dec. 19; Ricky Nichols, Dec. 20; and Evelyn McKeown, Dec. 21.

Happy 73rd anniversary to Margaret and Leslie Greene, on Dec. 18; to Bill and Betty Malkowski, their 64th on Dec. 20; Ray and Betty Call, Dec. 20; and Pastor Dr. Kelvin and Mrs. McCune, their 31st on Dec. 21.

Brandywine-Aquasco

by Audrey Johnson 301 888 2153

30th ANNIVERSARY FESTIVAL OF LIGHTS

Join us as we celebrate the 30th Anniversary Winter Festival of Lights in Prince George's County Friday, November 25, 2016 through Sunday, January 1, 2017 from 5:00 PM-9:30 PM nightly. This spectacular holiday drive-through event features more than one million twinkling lights, wonderful themed displays, and one of the tallest tree displays in the state. Make a difference this season. Please bring canned goods for donation to local food banks.

New fees for 2016 are \$10/car or mini-van, \$15 multi-visit, transferable ticket booklet for cars and Vans (3 visits). \$20/min-bus (seats 13 to 24) or limo, \$30/bus (seat 25 or more) no reservations required. Free on December 5 Community Service Providers Appreciation Night. Free on December 25. Sorry, cash only. Checks and credit cards are not accepted. Call 301-699-2456; TTY 301-699-2544 for information or visit the website at <http://www.pgparcs.com/FestivalofLights.htm>.

SCHOLARS

Scholars in Kindergarten, First, Second, Third, Fourth and Fifth Grades were honored for their achievements at Barack Obama Elementary School First Quarter Awards Ceremony on November 30, 2016. Parents thank you for your continued support with the school's endeavors.

BROOKFIELD-IMMANUEL COMMUNITY CANTATA

Brookfield-Immanuel Charge presented their Cantata Sunday December 4, 2016 in Baden Maryland. Their Cantata this year was dedicated to the memory of one of their favorite singers, Bradley Johnson. Bradley had been a part of their Community Cantata performances since 2010. His voice was deeply missed in this 2016 performance.

CHIRST UNITED METHODIST CHURCH

Christ United Methodist Church Outreach Ministry of Aquasco, Maryland presents MEMPHIS City of the Blues and Tunica Casino Resort for 7 days and 6 nights. The dates are Sunday August 6, 2017-Saturday August 12, 2017.

The cost is \$590 for motor coach transportation, 6 nights lodging including 4 consecutive nights at a Tunica Area Casino Resort. You will receive 6 breakfasts and 4 dinners. Admission to National Civil Rights Museum and admission to Stax Museum of American Soul Music. You will have the opportunity to spend free time on Beale Street in Memphis and receive a guided tour of Memphis, Tennessee. You will also have admission to Memphis Rock N' Soul Museum, Graceland which is the home of Elvis Presley and many more things to do on your trip.

The cost is \$75 due upon signing. Price per person, based on double occupancy. The cost is \$785 for single occupancy and \$570 for triple occupancy. Final payment due 5/30/2017. To obtain information and make reservations please contact Phyllis Slater @ (301) 653-7345, Grace Bryant @ 301-915-6462, Deborah Proctor @301-275-2544 or Rudell Jones @301-325-4857. Mail payments to Christ United Methodist Church, 22919 Christ Church Road, Aquasco, Maryland 20608

Neighborhoods

ESFCU Awards \$500 to its "Tips and Tools" Grand Prize Winner at Greencastle Elementary School

GREENBELT, MD—Educational Systems Federal Credit Union recently wrapped up its "Tips and Tools for Back to School" contest where members of the education community were invited to share advice for a successful school year. The Grand Prize Winner, Amie Wohlfarth, selected Greencastle Elementary School in Montgomery County where she teaches second grade to receive a \$500 donation provided by the Credit Union.

Wohlfarth's winning submission highlighted two apps that she uses daily to stay connected to parents. The Remind and Class Dojo apps help her coordinate parent/teacher conferences, share pictures and provide updates on the progress of students. She also awards students with points through the apps when they are doing well.

"Greencastle Elementary School has become a second home to me, and they have welcomed me with open arms," said Amie Wohlfarth. "I was so pleased to be able to give something back to the school to show my appreciation for the opportunity they have given me. The staff and



PHOTO COURTESY ESFCU

Pictured left to right: Vic Samuels, Vice President of Community Relations at Educational Systems FCU; Amie Wohlfarth, "Tips and Tools for Back-to-School" Grand Prize Winner and teacher at Greencastle Elementary School; and Dr. Ayesha McArthur Moore, Principal of Greencastle Elementary School.

students deserve to be recognized for their hard work and dedication. I thank Educational Systems Federal Credit Union for this amazing donation!"

"Our core purpose is serving the education community," said Chris Conway, President/CEO of Educational Systems FCU. "We started the 'Tips and Tools for Back to School' promotion four years ago to provide a forum through the Credit Union's Facebook page for the education community to provide tips

to help educators and students achieve success throughout the new school year."

Educational Systems FCU (esfcu.org) has proudly served the education community for over 60 years. With over \$850 million in assets and 12 branches, the Credit Union serves over 85,000 members in seven school systems and three community colleges throughout Anne Arundel, Calvert, Charles, Montgomery, Prince George's, St. Mary's and Talbot counties.

Environmental Protection Agency Identifies Source of Sheen in Potomac River

WSSC Drinking Water is Unaffected—Precautionary Steps Continue

LAUREL, MD—The Environmental Protection Agency (EPA) has determined the source of an oily substance that leaked into the Potomac River beginning Sunday, November 27. NRG Energy (NRG) operates a power plant in Dickerson, MD which has been determined to be the source of the leak.

To date, the oily substance has never been observed at or near the WSSC's Potomac River intake. WSSC's Potomac plant continues to operate at full capacity and the Commission has not experienced any adverse impact to its drinking water quality.

Over the course of the last week, WSSC took the following precautionary steps to protect its source water in the event the substance moves downriver.

- Crews placed a boom in the river to divert any floating substance away from the intake on Monday (11/28). An additional boom was put in place on Thursday (12/1) near the intake as an additional precaution.

- WSSC continues to maintain our system at full capacity.

- All maintenance activities that require flushing of pipes have been halted.

- An enhanced monitoring plan is in place at the plant, including hourly tests of the water in the river near the intake and adding additional testing of the water as it comes into the plant and before water goes out into the distribution system.

The Potomac Water Filtration Plant produces approximately 70 percent of WSSC's treated water each day for customers across Montgomery and Prince George's counties. The Patuxent Water Filtration Plant supplies the remainder to WSSC's customers.

All inquiries regarding the ongoing investigation should be addressed to Terri A. White, 215-814-5523, white.terri@epa.gov, Unified Command,

which is comprised of the EPA, Maryland Department of the Environment, Maryland Emergency Management Agency, Virginia Department of Emergency Management, and Virginia Department of Environmental Quality. NRG is now being added to the Unified Command to coordinate efforts going forward.

Hospital's Clinical Pastoral Care Education Program Designates Four People as Lay-Healthcare Chaplains

LANHAM, MD—Doctors Community Hospital designated four people as lay-healthcare chaplains. By completing its Clinical Pastoral Care Training Program, these designees have elevated their knowledge to further provide religious and spiritual support to people (e.g., patients, family members and employees) within healthcare settings.

The Clinical Pastoral Care Training Program requires that each participant attend three eight-week training classes and complete 200 hours of practical training—all supervised by a board-certified healthcare chaplain and with the approval of Doctors Community Hospital's certification endorsement committee.

The hospital congratulates this year's recipients:

- Dr. Charles Dockett and Dr. Margaret Dockett, Fort Washington, MD

- Dr. Juanita Ware, Capitol Heights, MD

- Minister Lydia Wainwright, Bowie, MD

For more information about this free training program, contact Doctors Community Hospital's Pastoral Care Department at 301-552-8051.

BGE Joins National Effort to Help Protect Customers From Scammers

BALTIMORE, MD—BGE has joined forces with electric and natural gas utility companies across the United States and Canada to help protect customers from the long-running

scams targeting customers of utility service providers. BGE and the other Exelon utilities, Atlantic City Electric, ComEd, Delmarva Power, PECO and Pepco are committed to educating customers and putting a stop to scamming.

"BGE is proud to join utilities across the country to partner in this important effort against scamming," said Rob Biagiotti, vice president and chief customer officer for BGE. "We want to remind our customers that there may be occasions when BGE may need to call or visit homes or businesses for emergencies or to inspect or install equipment, but these situations can always be verified by calling BGE at 800.685.0123."

When being scammed, a customer typically receives an unsolicited phone call from an individual who falsely claims to be a utility representative. The scammer warns that the customer's service will be shut off if the customer fails to make a payment—usually within a short timeframe through a prepaid debit card.

Scammers have even duplicated the upfront Interactive Voice Response system of some utilities, so when customers call the number provided by the scammer, it sounds like a legitimate business. Some of these scammers also use caller ID spoofing to replicate a utility's phone number.

Red flags for scam activity

- The scammer often becomes angry and tells a customer his or her account is past due and service will be shut off if a large payment isn't made—usually within less than an hour.

- The scammer instructs the customer to purchase a prepaid debit or credit card—widely available at most retail stores—then call him or her back to supposedly make a payment.

- The scammer asks the customer for the prepaid

COMMUNITY

Practical Money Skills

By Nathaniel Sillin

When Might Opening a Joint Bank Account Make Sense?

Did you recently get married, move in with a new roommate, see a child off to college or start managing a relative's finances? The change in relationship dynamics could prompt you to consider tying part of your financial lives together by opening a joint bank account.

You might enjoy the conveniences a joint account offers, or you could see it as a symbolic step in your relationship. But before you open a bank account with someone else, consider the potential benefits and drawbacks of the arrangement.

First, here's a quick introduction to joint accounts. Individual and joint accounts are similar in many ways. You can open a joint account at an online-only bank or local bank branch. However, with a joint account both co-owners can deposit or withdraw money as if it was an individual account. The account holders can also write checks, make online payments or transfers and use the account's debit cards (if it offers them) to make purchases or withdrawals.

Let's start with a few situations where you might want to use a joint bank account, followed by examples of why the arrangement might not make sense for you.

You might want a joint account if you share financial responsibilities with someone else. Sharing a joint account could be a good option if you're married or living with a significant other. Some couples keep their individual accounts and also create a joint account where they deposit a portion of their paychecks and use the money to pay for household expenses or a shared savings goal.

With two people contributing to and watching a shared account, it could be easier to meet minimum balance requirements and identify savings opportunities. Some accounts also offer higher interest rates the more money you have in the account.

A shared account could also help you care for a family member. A joint bank account could help you care for relatives, whether they live nearby or in another state. With co-owner access, it'll be easy to deposit or transfer funds online and at a bank branch, pay the person's bills from the account and keep an eye on the account's activity and balance.

But beware, joint accounts give everyone full ownership of the money. No matter who makes the deposit, once money is in a joint account, each member "owns" it and can legally spend it however he or she wants. In other words, you might not have any recourse if your new roommate raids a joint account and spends the rent money on a weekend getaway.

A joint account holder's debt could also spell trouble for everyone on the account. Because every joint account holder has equal rights to the money, creditors can go after the money in a joint account if they sue one of the account holders. Meaning all the money is at risk if one person gets sued, falls behind on bills or doesn't pay taxes.

If you're considering using a joint account to help manage an older relative's finances, a convenience account or getting power of attorney may be potentially safer alternatives.

Communication and trust are vital to managing a joint account. Lack of communication between joint account holders could lead to overdrawn accounts or low balances, and the corresponding fees. It can also lead to disputes if the owners have different ideas of how the money should be spent.

Some co-owners make an informal agreement before opening an account together. Although it won't have legal backing, you could create a rule that you have to ask the other person before spending \$150 or more. Using a mobile app to check a joint account's balance before making a purchase could also help you avoid mistakes.

Bottom line: While joint bank accounts let two or more people share access to an account, the convenience of the arrangement can sometimes be outweighed by the risks it poses to the co-owners. Even if you trust the other co-owner, having a clear understanding of the intention behind the account and how the money will be used are important to avoiding arguments and mismanagement of your joint funds.

Shuttle Bus from A1

opening on Dec. 8. National Harbor executives and employees have worked diligently with local officials, law enforcement and prime stakeholders on traffic planning. In addition, Metro opened a new bus route this fall from Alexandria to National Harbor.

"We have been working closely with local officials and law enforcement to do everything in our power to anticipate, mitigate and respond to any traffic situations that may arise during the opening of MGM," said Kent Digby, senior vice president of operations at National Harbor. "We are doing



Cheverly Recognized as Sustainable Community

Maryland Department of Housing and Community Development Celebrates Designation of Over 100 Sustainable Communities

By PRESS OFFICER
Maryland DHCD

LANHAM, MD—With the recent designation of eight new Sustainable Communities, the program has reached a milestone—there are now over 100 Sustainable Communities across the state. Since 2010, the Sustainable Communities program, overseen by the Maryland Department of Housing and Community Development, has provided local governments with a framework for promoting environmentally, economically and socially responsible growth and development in Maryland's existing population centers.

But the program is about more than a label and a broad set of ideals. The Sustainable Communities program is based on a proven history of targeting investments in places with a detailed revitalization plan, specific geographies for investment, and stakeholders within the community who are committed to implementing the plan. As part of the program, local officials evaluate their own community's strengths and weaknesses, identify implementation partners, and strive for tangible goals for the long-term vitality of the places many Marylanders live and work.

To help local governments achieve their goals, Sustainable Communities have access to various funding programs from a number of state agencies. These programs are aimed to promote the wellbeing of both residents and businesses through grants, loans and tax credits.

To date, the program has designated 103 Sustainable Communities. These communities comprise 102 municipalities and 60 unincorporated areas, since some Sustainable Communities contain more than one locality. While only 3.6 percent of Maryland's landmass is located within designated Sustainable Communities, the department estimates these areas are home to 40 percent of Maryland's small businesses. Over 80 percent of the cities and towns designated by the program have been incorporated for at least 100 years, and

more than half of all Sustainable Communities contain a nationally designated historic district.

In November 2016, eight communities received the Sustainable Communities designation:

Town of Cecilton (Cecil County)

As Cecil County's largest crossroads south of the Chesapeake and Delaware Canal, Cecilton is a charming town with extensive green infrastructure and a successful new Town Activities Center. Environmental sustainability has been a major priority for the town, which recently completed a subwatershed study funded by the EPA Chesapeake Bay Program and a Maryland Energy Administration-sponsored energy audit. Among its assets are the Town Park and bike lanes, the expansion of which Cecilton hopes can serve its goal of becoming an even greater regional destination for recreation. In addition to upgrades and repairs that make the park more multifunctional, the town will also pursue efforts to improve drainage ditch maintenance due to excess agricultural runoff and to expand its housing stock, especially for seniors. Pedestrian safety has been a challenge, so Cecilton intends to seek Safe Routes to School funding and respond to the heavy truck traffic detouring from Delaware's stretch of U.S. Route 1. The town also aims to attract commercial opportunities to provide retail services and jobs for its residents, many of whom currently travel to nearby Elkton or across the state line to Middletown, Delaware, for their daily needs.

Town of Cheverly (Prince George's County)

Just a couple of miles away from the Washington, D.C. border, the Town of Cheverly is a diverse community with convenient access to the District and other parts of Maryland via the WMATA Metrorail Orange Line, the Baltimore-Washington Parkway, U.S. 50 and Maryland 202. These routes surround a cohesive and affordable residential community with rising property values and a healthy commercial

and industrial base with low vacancy rates. Several park areas, streams and vegetative buffers define the town, which also has an extensive tree canopy. Cheverly's revitalization priorities include reducing impervious surfaces to enhance the quality of stormwater runoff and implementing environmental site design in new construction and redevelopment projects. There will also be efforts to boost the already strong retail market by making aesthetic improvements to the town's outdated commercial areas and expanding its shopping and dining offerings, such as a centrally-located coffee shop. Upgrades are needed for Cheverly's transit facilities, including its Metro station which currently has the system's lowest daytime ridership. Rounding out the town's plans are new community gathering spaces and events, as well as enhancements to bike and pedestrian connectivity inside Cheverly and with nearby trail networks.

Long Reach Village (Howard County)

One of the earlier villages to emerge from Columbia's innovative mid-century master plan, Long Reach comprises a commercially-oriented village center and four residential neighborhoods. The village center area, which will be the primary target of Howard County's redevelopment efforts, includes retail space as well as the Columbia Association's Art Center and Stonehouse community center. Popular nearby recreational amenities, such as Blandair Park, Jackson Pond and a future indoor tennis facility, are complements to Long Reach's trail network, community gardens, and the high school's top-ranked environmental program. Revitalization strategies will promote new uses for the blighted village center, which is now largely county-owned, currently without an anchor store, and facing nearly 70 percent vacancy as recently as 2014. The county also plans to reduce impervious surfaces, employ better energy practices, improve its transit, bike and pedestrian networks, and develop more active public

spaces. Homeowners in Long Reach would have access to programs for rehabilitation of older properties, and the county plans to investigate ways for the village to offer new housing units in response to the area's high demand.

Town of Mardela Springs (Wicomico County)

The small town of Mardela Springs can be found along Barren Creek, a tributary of the Nanticoke River, providing it with navigable water access and plentiful acreage for recreation. Mardela Springs is also a haven for small businesses, such as the nation's largest indoor coral farm, and a central component of the Lower Eastern Shore Heritage Area, boasting the County's Westside Historical Society and the Barren Creek Heritage Museum. The town recently submitted a Waterway Improvement Grant application to improve its boat ramp facility, which could expand to include a kayak launch by way of other funding mechanisms now available through Sustainable Communities. Mardela Springs will also look to revamp its streetscape by developing more sidewalks and ensuring its existing pedestrian network is ADA compliant. Drainage improvements will help overcome stormwater issues brought by curb and gutter deterioration, and new and improved commercial development will expand the tax base for the historic creekside town. Home repairs on the town's abandoned and condemned properties would supplement Mardela Springs' already affordable housing opportunities.

Town of New Market (Frederick County)

For more than 200 years, New Market has stood watch over one of the state's most important corridors, connecting Baltimore with Frederick and points west. The town's history can be seen in the storefronts of its historic Main Street corridor, the heart and soul of New Market and the focal point of many

See HOUSING Page A6

Final Session from A1

human trafficking. Council Bill 63-2016 prohibits the illegal sale of vehicles on County roads, more commonly known as "curbstoning." Council Bill 64-2016 addresses public health concerns related to the accumulation of garbage or litter following an eviction and mandates landlords to remove all garbage, litter and trash from the property within one business day.

Council Bill 75-2016 was also adopted, requiring that at least

50% of County funds be deposited and maintained in county-based, minority, or small banking institutions or depositories.

The Council's Rules and General Assembly Committee has also completed its work for Legislative Year 2016, which included a revision of the County Council and District Council Rules of Procedure.

Council Vice Chair Danielle Glaros (D)—District 3, Rules and General Assembly Committee Chair, says updating Council rules was a priority for the committee.

Scammers from A2

card's receipt number and PIN number, which grants instant access to the funds loaded to the card.

How to protect yourself

- Utility representatives will never ask or require a customer with a past due balance to purchase a prepaid debit card to avoid disconnection.
- Customers can make payments online, by phone, automatic bank withdrawal, mail or in person.
- Customers with a past due balance will receive multiple

shut off notifications—never a single notification one hour before disconnection.

Don't Get Scammed: Customers can avoid being scammed by taking a few precautions:

- Never provide social security numbers or personal information to anyone initiating contact with you claiming to be a utility representative or requesting you to send money to another person or entity other than your local utility providers.
- Always ask to see a company photo ID before allowing any utility worker into your home or business.

"This is the first major review of the County Council and District Council Rules of Procedure in nearly twenty years so I am extremely pleased with what we were able to accomplish. Most notable being an even greater level of transparency concerning standing committee meetings, which will be recorded and posted on the Council's website beginning 2017."

In other Council Action, Council Resolution 84-2016 was adopted, establishing process for Developmentally Disabilities Administration

• When in doubt, check it out. Be skeptical of individuals wearing clothing with old or defaced company logos. If you have any doubts, ask to see a company photo ID.

• Never make payment for services to anyone coming to the door.

Any BGE customer who believes he or she has been a target of a scam is urged to contact their local police, and call BGE immediately at 800.685.0123 to report the situation.

BGE, founded in 1816 as the nation's first gas utility, is Maryland's largest natural gas and electric utility. Headquartered in

Providers to seek a waiver from the County's minimum wage law. While the minimum wage was increased in Prince George's County under CB-94-2013, the wage rate has caused a challenge for certain disability providers who cannot afford to pay their workers the County's minimum wage. CR-84-2016 closes the gap between wages paid by the State and what County law requires. Companion legislation, CB-96-2016, which was also approved, establishes the extension in Prince George's County.

Baltimore, BGE delivers power to more than 1.25 million electric customers and more than 650,000 natural gas customers in central Maryland. The company's approximately 3,200 employees are committed to the safe and reliable delivery of natural gas and electricity, as well as enhanced energy management, conservation, environmental stewardship and community assistance. BGE is a subsidiary of Exelon Corporation (NYSE: EXC), the nation's leading competitive energy provider. Like us on Facebook and follow us on Twitter, YouTube and Flickr.

COMMENTARY

Rushern L. Baker, III Executive of Prince George's County



Statement of Prince George's County Executive Rushern L. Baker, III Regarding Newly Elected County Council Leadership

County Council Members Derrick L. Davis and Dannielle M. Glaros Remain in Council Leadership Roles

UPPER MARLBORO, MD—Prince George's County Executive Rushern L. Baker, III, released this statement after Council Member Derrick L. Davis was elected Chairman of the County Council and Council Member Dannielle M. Glaros was elected Vice Chair for a second term:

"I would like to congratulate Council Member Derrick L. Davis and Council Member Dannielle M. Glaros as they take on the leadership of the Prince George's County Council for another year.

I look forward to working with them, and the rest of the Council, as we strive to move our great County forward and improve the quality of life for all our residents, citizens and businesses.

Good things are happening in Prince George's County. Housing prices are rising. We are creating new jobs. And we are a healthier community. I am confident that we will continue to be successful in 2017 with Mr. Davis and Ms. Glaros leading the council."

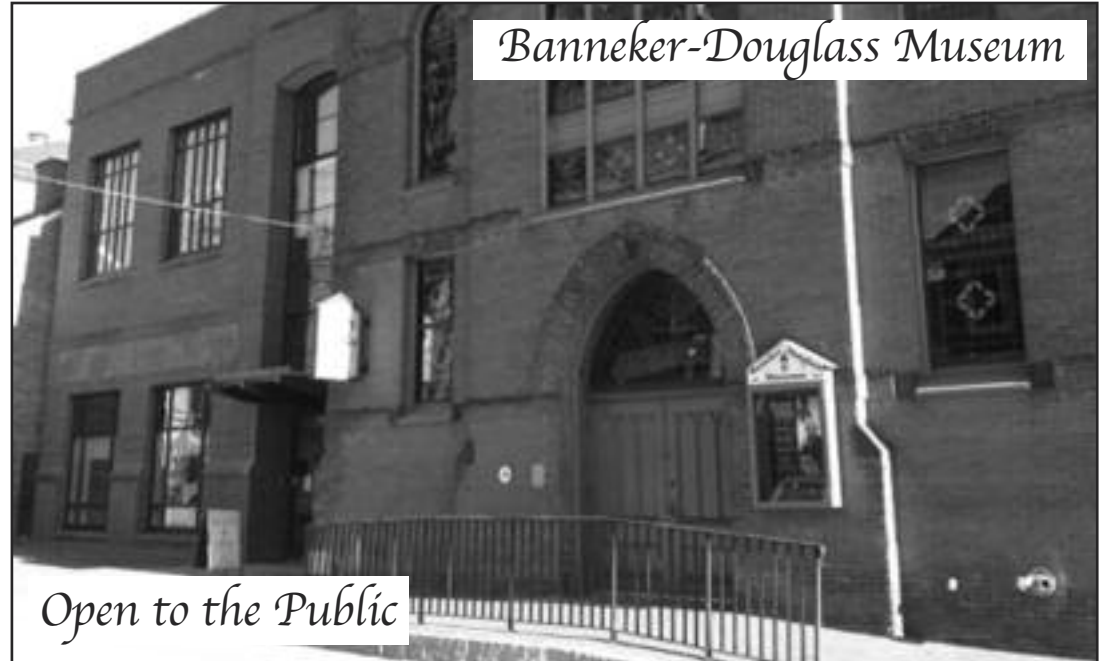


PHOTO CREDIT: ANONYMOUS

BANNEKER-DOUGLASS MUSEUM

The Banneker-Douglass Museum, located in Annapolis, maintains the state's official collection of African-American history and culture. Named for Benjamin Banneker and Frederick Douglass, this former AME church-now museum hosts lectures, workshops, performances, and multiple exhibits. The museum is open Tuesdays-Saturdays, 10am through 4pm. Admission to the museum is free. Scheduled guided tours and site rentals are available for a fee. Contact the museum at 410.216.6180 or at bannekerdouglassmuseum@gmail.com for further information.

Marc Morial, President and CEO National Urban League



World AIDS Day 2016: Envisioning the Beginning of the End

I'm very proud of what we've accomplished together over the past eight years. Here and around the world, over 18 million people are receiving the treatment and care they need—millions of infections have been prevented. What once seemed like an impossible dream, the dream of an AIDS-free generation, is within our grasp. But we know that there's work to do to banish stigma, save lives and empower everyone to reach their potential... Today we remember those we've lost, and reflect on the extraordinary progress we've won. We give thanks to the heroes on the front lines of this fight and tomorrow we get back out there, because together, we can do this."

—President Barack Obama, Video Message for World AIDS Day, December 1, 2016

On June 5, 1981, the Centers for Disease Control published its weekly Morbidity and Mortality Report. The report—which described five cases of previously healthy, young gay men in Los Angeles infected with a rare lung infection—would eventually become recognized as the first official report on HIV/AIDS in the United States.

Since the start of the epidemic 35 years ago, an estimated 35 million people have died from AIDS-related illnesses around the globe. In the United States alone, more than 700,000 people have died an AIDS death since the beginning of the epidemic. Thirty-five years ago, testing HIV positive was an automatic death sentence, but today, as a result of targeted HIV prevention efforts, rapid testing, advances in treatment and increased access to life-saving health care, what was once a death sentence is now, in many cases, a chronic disease that can be lived with and managed.

Today, more than 1.2 million people in the United States are living with HIV, according to the CDC. New infections are down from their peaks in the 80s and 90s, with the CDC estimating that new HIV diagnoses have fallen by 19 percent from 2005 to 2014. The death rate from AIDS-related illnesses has dropped by 30 percent, approaching our nation's 2020 target rate. As we celebrate those numbers, we must keep in mind that the epidemic is far from over and that our progress in combating this disease has been uneven and remains riddled with all-too-familiar racial and socioeconomic disparities. African Americans and Latinos continue to bear the dis-

proportionate burden of HIV infection in our nation. In 2015, African Americans, who represent 12 percent of the U.S. population, accounted for 45 percent of HIV diagnoses. While Latinos, who represent 18 percent of the U.S. population, accounted for 24 percent of HIV diagnoses. Regionally, the South is experiencing the highest infection rates, illness and deaths than any other U.S. region, with the Southern states accounting for close to half—an estimated 44 percent—of all people living with an HIV diagnosis in the United States.

For those of us on the front lines of the battle versus this epidemic, these numbers are a call to action to put an end to HIV with leadership and commitment that amplifies our impact in all communities ravaged by this disease. It is also a vivid reminder that health, health care, disease and its dissemination and eradication do not exist in a cultural or social vacuum. The link between health, social and economic equity and our vision of an AIDS-free generation is real and borne out by the shocking rate of HIV/AIDS in communities of color and vulnerable populations. Given the disproportionate impact of the epidemic in communities of color, effectively addressing HIV/AIDS in the United States also means addressing poverty and a lack of access to health care.

The National Urban League and its affiliates continue to partner with organizations and groups working to decrease and defeat HIV/AIDS in the hardest hit populations. League affiliates have joined the Act Against AIDS Leadership Alliance. As a part of AAALI, more than 500 HIV related events and trainings have taken place. As a member of PACT (Partnering and Communicating Together to Act Against AIDS), we work on achieving the goals of the National HIV/AIDS Strategy (NHAS) by reducing HIV infections, improving health outcomes for people living with HIV and reducing HIV related disparities.

Here is a final sobering statistic: 1 in 8 people living with HIV in the United States are unaware of their status. We cannot fight what we don't know. We need leadership from service providers, advocates, doctors and government officials, but all of us, have a role to play on the journey towards an AIDS-free generation. Protect yourself and reduce the risk of spreading HIV, or any STD, by getting tested and knowing your status. We must all commit to keeping our communities healthy.

Child Watch by Marion Wright Edelman



Stay Strong: Fight Back

The last few weeks have been a very difficult time for so many of us and we may want to give up the struggle to ensure every child an equal chance to live and learn and grow up safely in our boastfully rich and militarily powerful but spiritually anemic nation that lets children be our poorest group of Americans. At one of my very discouraging times, I heard my beloved late spiritual director Gordon Cosby of the Church of the Saviour in Washington, D.C. read this "Request for Transfer" by an unknown author which I return to at very tough times. In this period of political turbulence and division I wanted to share it to spur us forward to save our children with all our hearts and minds and strength.

Please refresh yourself throughout this holy season of Hanukkah and Advent as those of us who are Christians prepare to celebrate the birth of the most famous poor baby in history. Let us emerge with new determination to keep moving forward for children and the poor.

"Request for Transfer"

To: Commander-in-Chief
From: Battlefield Soldier
Subject: Request for Transfer
Dear Lord,

I'm writing this to You to request a transfer to a desk job. I herewith present my reasons:

I began my career as a private, but because of the intensity of the battle, You quickly moved me up in the ranks. You made me an officer and gave me a tremendous amount of responsibility. There are many soldiers and recruits under my charge. I'm constantly being called upon to dispense wisdom, make judgments, and find solutions to complex problems.

You have placed me in a position to function as an officer, when in my heart I know I have only the skills of a private. I realize that You promised to supply all I would need for the battle. But sir, I must present You a realistic picture of my equipment. My uniform, once so crisp and starched, is now stained with tears and blood of those I have tried to help. The soles of my boots are cracked and worn from the miles I have walked trying to enlist and encourage the troops.

My weapons are marred, tarnished, and chipped from con-

stant battle against the enemy. Even the *Book of Regulations* I was issued has been torn and tattered from endless use. The words are now smeared.

You promised You would be with me throughout the war, but when the noise of the battle is so loud and the confusion is so great, I can neither see nor hear You. I feel so alone. I'm tired. I'm discouraged. I have battle fatigue.

I'd never ask for a discharge. I love being in Your service. But I humbly request a demotion and transfer. I'll file papers or clean latrines. Just get me out of the battle—please, sir. Your faithful, but tired, soldier, John/Jane Q. Servant

To: Faithful but Tired Soldier
From: Commander-in-Chief
Subject: Request for Transfer
Dear Soldier:

Your request for transfer has been denied. I herewith present My reasons:

You are needed in the battle. I have selected you, and I gave My word to supply your need. You do not need a demotion and transfer. (You'd never cut it on latrine duty.) You need a period of "R and R"—renewal and rekindling. I am setting aside a place on the battlefield that is

insulated from all sound and fully protected from the enemy. I will meet you there, and I will give you rest. I will remove your old equipment and make all things new.

You have been wounded in the battle, My soldier. Your wounds are not visible, but you have received grave internal injuries. I will heal you. You have been weakened in the battle. I will strengthen you, and I will be your strength. I will instill in you confidence and ability. My Words will rekindle within you a renewed love, zeal, and enthusiasm.

Report to Me tattered and empty. I will refill you. Compassionately, Your Commander-in-Chief, God

Marion Wright Edelman is President of the Children's Defense Fund whose Leave No Child Behind® mission is to ensure every child a Healthy Start, a Head Start, a Fair Start, a Safe Start and a Moral Start in life and successful passage to adulthood with the help of caring families and communities. For more information go to www.childrensdefense.org.

Mrs. Edelman's Child Watch Column also appears each week on The Huffington Post.

The Prince George's Post

The Prince George's Post
P.O. Box 1001 15207 Marlboro Pike
Upper Marlboro, MD 20772-3151
Phone: 301-627-0900 • Legal Fax: 301-627-6260
Email: pgpost@gmail.com
Contents © 2016, The Prince George's Post

Publisher/Senior Editor Legusta Floyd	Editor Michal W. Frangia
General Manager/ Legal Advertising Manager Brenda Boice	Typesetter/Page Layout Jennifer Sheckels
Legal Advertising Assistant Robin Boerckel	Web Manager Kyler Quesenberry

Prince George's County, Md. Member National Newspaper Publishers Association, and the Maryland, Delaware, District of Columbia Press Association. The Prince George's Post (ISSN 10532226) is published every Thursday by the New Prince George's Post Inc., 15207 Marlboro Pike, Upper Marlboro, Md. 20772-3151. Subscription rate: 25 cents per single copy; \$15 per year; \$7.50 senior citizens and students; out of county add \$1; out of state add \$2. Periodical postage paid at Southern Md. 20790. Postmaster, send address changes to Prince George's Post, P.O. Box 1001, Upper Marlboro, Md. 20772-3151.

Hospice of the Chesapeake Seeks Volunteers With 4-Wheel Drive vVehicles

PASADENA, MD—Volunteers with four-wheel drive vehicles are needed to assist Hospice of the Chesapeake patients and staff in Anne Arundel and Prince George's Counties during inclement weather conditions.

For additional information or to volunteer, please contact our Volunteer Department at 443-837-1508 or toll free 800-745-6132.

Caring for life throughout the journey with illness and loss is the mission of Hospice of the Chesapeake. For more information, please visit www.hospicechesapeake.org.

BUSINESS

The American Counseling Association's Counseling Corner

Learning to Care for Yourself When Caring for Another

Taking care of a loved one is not an uncommon occurrence these days. Lifestyle changes and medical advances have more people living longer, but sometimes without the ability to safely handle the challenges of daily living themselves.

It isn't simply an aging population that is expanding the need for caregivers. Many families have members who may have mental or physical impairments, or serious, debilitating health issues. And while there are a growing number of facilities and organizations that can provide care, they are often out of the financial reach of many families or go against a family's wishes to personally provide the needed care for a loved one.

The result is that many people find themselves in the role of family caregiver, a role that can often be close to a 24-hour, 7-day a week job. Unfortunately, many of those providing family care often fail to realize or choose to ignore the toll that such an obligation, along with other family or work requirements, can have on them.

While there are no easy solutions to such situations, there are things that can be done to help family caregivers take better care of themselves.

In many cities, it is possible to find businesses, organizations or individuals who can provide what is called "respite" care. This is when someone comes in for a few hours, maybe once or several times a week, in order to give the primary caregiver a much-needed break. Such services, however, can be hard to find in many places, especially smaller towns and rural areas, and may be prohibitively expensive if they are available.

The alternative is for the individual providing the care to learn to care better for himself or herself, to essentially work out a "personal respite" program.

This can take a variety of forms, from just scheduling a short break to have a cup of tea or read a book, to turning to friends and other family members for their assistance in providing the help that will give the caretaker a few hours of personal time.

While family caregivers tend to be concerned, giving people, it's vital for them to monitor their own mental and physical well-being, too. Failing to recognize when the stress of helping is having a negative impact on their patience or ability to think clearly or respond appropriately can lead to serious and unexpected issues.

Counseling Corner is provided by the American Counseling Association. Comments and questions to ACAcorner@counseling.org or visit the ACA website at www.counseling.org

China from A1

sion delegates upon their arrival in China.

The Greater Washington China Investment Center (GWCIC) President Bill Black, an expert on Chinese foreign direct investment has partnered with the EDC on several occasions to match make Chinese investors with projects in Prince George's County. GWCIC is a public-private partnership designed to help small to mid-sized Chinese companies seeking to go global with a guided entrance to the U.S. market.

"Today was an extraordinary event, having Chinese business leaders here and seeing the best of Washington," said Black. "This was a very unique experience. Having Jim Coleman's presentation really demonstrated the special characteristics of Prince George's County that make it such an attractive place to do business."

For more information on international business development or the China Business Center, contact Pradeep Ganguly (pganguly@co.pg.md.us) or 301-583-4650 or go to our website www.pgcedc.com.

Workshop from A1

who are coming back from being incarcerated."

Throughout his tenure with the Workforce Services Division of the EDC, Goodson has helped thousands of returning citizens find gainful employment. What he sees as his calling is truly impacting the lives of Prince George's County residents. Robert, who met Goodson over five years ago as a returning citizen, credits Goodson's passion and care as a driving force for his success.

"Mr. Goodson is the closest thing that I have to a father," said Robert. "My first meeting with him was my first encounter with an angel. A lot of people believe that to be an angel, you have to have wings and a harp but you can define an angel by the work that they do and the effect they have on your life. Mr. Goodson made a big change in my life. What is special about what he did for me was that he cares. I wasn't just the 'next' person on his list

but rather someone who was important enough for him to make time."

The care and attention that Robert describes is a common theme in the One-Stop Center, especially when customers talk about Mr. Goodson. His passion for helping people matched with the many resources available has helped him and others in the One-Stop Center successfully place thousands of returning residents in sustainable jobs.

Resources available to returning citizens include Job Club, Resumé Workshops, Federal Bonding letters, Job Search Assistance and Customized WIOA training. These services are offered at no cost at the Prince George's One-Stop Career System which serves over 700 people on a weekly basis.

To learn more about resources at the EDC Workforce Services Division that are available for returning residents, please contact Pete Goodson at the Prince George's One Stop Center at (301) 618-8425.

USDA Grants \$20.2 Million for Food and Forestry Research and Development Projects

More Than 30 Small Businesses to Receive Second-Round Funding for Innovative Solutions in Food Production, Food Safety and Forest Management

By PRESS OFFICER
USDA

WASHINGTON, D.C.—Agriculture Secretary Tom Vilsack today announced that USDA will grant \$20.2 million to help 34 small businesses move forward with innovative research and development projects to benefit food security, natural resources conservation and other agricultural issues. These competitive grants are made through the Small Business Innovation Research (SBIR) program, which is coordinated by the Small Business Administration and administered by 11 federal agencies including the U.S. Department of Agriculture's (USDA) National Institute of Food and Agriculture (NIFA).

"I offer my sincere congratulations to these recipients who have demonstrated that their ideas have strong potential for commercialization and can provide real solutions to tough issues that the food, agriculture and forestry sectors are facing," said Vilsack. "Studies have shown that every dollar invested in agricultural research now returns over \$20 to our economy, and that's why USDA has increased our investment in delivering problem-driven and solutions-based science from the farm to the lab to the boardroom. Since 2009, through the Small Business Innovation Research program alone, USDA has awarded nearly 850 research and development grants to American-owned, independently operated, for-profit businesses, allowing hundreds of small businesses to explore their technological potential, and provid-

ing an incentive to profit from the commercialization of innovative ideas."

Since 2009, USDA has invested \$19 billion in research and development touching the lives of all Americans from farms to the kitchen table and from the air we breathe to the energy that powers our country. Learn more about the many ways USDA scientists are on the cutting edge, helping to protect, secure and improve our food, agricultural and natural resources systems in USDA's Medium Chapter 11: Food and Ag Science Will Shape Our Future.

The Small Business Innovation Research (SBIR) program offers two phases of investment. Phase I invests in feasibility studies of up to \$100,000 and Phase II grants of up to \$600,000 support project implementation by grantees who successfully completed Phase I. Recipients of today's announcement are all receiving Phase II grants. SBIR funding comes from multiple USDA agencies including NIFA, the Animal and Plant Health Inspection Service, Agricultural Research Service, Economic Research Service, National Agricultural Statistics Service and U.S. Forest Service.

Examples of projects that will receive funding include:

- NVE Corporation in Eden Prairie, Minn., will develop a prototype salmonella pathogen detector that will reduce the potential for disease outbreaks and costly food recalls.

- Nano Terra, Inc. in Cambridge, Mass., will develop a cost-competitive, low-toxicity,

ammonium-free long-term fire retardant for use in wildfire management that is less toxic to fish and mammals.

- eWind Solutions, LLC, in Wilsonville, Ore., will create a wind energy system for small farmers that is efficient, affordable and easy to use. The system collects the stronger, more reliable winds found at higher altitudes that are inaccessible from wind towers that most small farmers can currently afford.

- Grafted Growers, LLC, in Tucson, Ariz., will improve crop production methods and strategies and promote energy conservation and efficiency by developing a sustainable indoor crop growing system (SIGS). SIGS will produce large numbers of affordable, higher quality vegetable transplants using fewer resources using less land than current greenhouse and field production systems.

Details on all of the SBIR projects announced today are available on NIFA's SBIR webpage.

Recent examples of successful NIFA-funded SBIR projects include work by the Nitrate Elimination Company, Inc., which developed kits that allow farm managers to determine nitrate accumulation levels on their farms, helping them manage nitrate concentration, reduce costly nitrogen fertilizer use, and reduce pollutants. Whole Trees, LLC, developed a new market in construction for small-diameter round timber, a natural waste product of well-managed forests. Stony Creek Colors used a SBIR grant to develop a more efficient way to produce natural indigo dyes using the indigo

plant, replacing more commonly used synthetic indigo that pollutes waterways and is slow to decompose. See more examples of SBIR-funded research and development projects in the SBIR brochure available on the NIFA website.

Since 1983, the SBIR program has awarded more than 2,000 research and development grants to American-owned, independently operated for-profit businesses with up to 500 employees. Funded research areas include air, soil and water; animal production and protection; aquaculture; biofuels and biobased products; food science and nutrition; forests and related resources; plant production and protection—biology and engineering; rural and community development; and small and midsized farms.

NIFA invests in and advances innovative and transformative research, education and extension to solve societal challenges and ensure the long-term viability of agriculture. NIFA supports the best and brightest scientists and extension personnel whose work results in user-inspired, groundbreaking discoveries that combat childhood obesity, improve and sustain rural economic growth, address water availability issues, increase food production, find new sources of energy, mitigate climate variability and ensure food safety.

To learn more about NIFA's impact on agricultural science, visit www.nifa.usda.gov/impacts, sign up for email updates or follow us on Twitter @usda_nifa, #NIFAimpacts.

In 2017, IRS Says Some Tax Benefits Increase Slightly Due to Inflation, Others Remain Unchanged

By PRESS OFFICER
Office of the Comptroller

ANNAPOLIS, MD—The Internal Revenue Service has announced the tax year 2017 annual inflation adjustments for more than 50 tax provisions, including the tax rate schedules, and other tax changes. Revenue Procedure 2016-55 provides details about the annual adjustments. The tax year 2017 adjustments generally are used on tax returns filed in 2018. The tax items for tax year 2017 of greatest interest to most taxpayers include the following dollar amounts:

- The standard deduction for married filing jointly rises to \$12,700 for tax year 2017, up \$100 from the prior year. For single taxpayers and married individuals filing separately, the standard deduction rises to \$6,350 in 2017, up from \$6,300 in 2016. For heads of households, the standard deduction

will be \$9,350 for tax year 2017, up from \$9,300 for tax year 2016.

- The personal exemption for tax year 2017 remains as it was for 2016: \$4,050. However, the exemption is subject to a phase-out that begins with adjusted gross incomes of \$261,500 (\$313,800 for married couples filing jointly). It phases out completely at \$384,000 (\$436,300 for married couples filing jointly.)

- For tax year 2017, the 39.6 percent tax rate affects single taxpayers whose income exceeds \$418,400 (\$470,700 for married taxpayers filing jointly), up from \$415,050 and \$466,950, respectively. The other marginal rates—10, 15, 25, 28, 33 and 35 percent—and the related income tax thresholds for tax year 2017 are described in the revenue procedure.

- The limitation for itemized deductions to be claimed on tax year 2017 returns of individuals

begins with incomes of \$287,650 or more (\$313,800 for married couples filing jointly).

- The Alternative Minimum Tax exemption amount for tax year 2017 is \$54,300 and begins to phase out at \$120,700 (\$84,500, for married couples filing jointly for whom the exemption begins to phase out at \$160,900). The 2016 exemption amount was \$53,900 (\$83,800 for married couples filing jointly). For tax year 2017, the 28 percent tax rate applies to taxpayers with taxable incomes above \$187,800 (\$93,900 for married individuals filing separately).

- The tax year 2017 maximum Earned Income Credit amount is \$6,318 for taxpayers filing jointly who have three or more qualifying children, up from a total of \$6,269 for tax year 2016. The revenue procedure has a table providing maximum credit amounts for other categories, income thresholds and phase-outs.

- For tax year 2017, the monthly limitation for the qualified transportation fringe benefit is \$255, as is the monthly limitation for qualified parking.

- For calendar year 2017, the dollar amount used to determine the penalty for not maintaining minimum essential health coverage is \$695.

- For tax year 2017 participants who have self-only coverage in a Medical Savings Account, the plan must have an annual deductible that is not less than \$2,250 but not more than \$3,350; these amounts remain unchanged from 2016. For self-only coverage, the maximum out of pocket expense amount is \$4,500, up \$50 from 2016. For tax year 2017, participants with family coverage, the floor for the annual deductible is \$4,500, up from \$4,450 in

See IRS Page A8

Free Cab from A1

Montgomery and Prince George's; and throughout the Northern Virginia counties of Arlington, Fairfax, (eastern) Loudoun and Prince William. In these areas, local taxicab companies will be providing this no-cost service to local residents age 21 and older who otherwise may have attempted to drive home after drinking.

Since 1993, WRAP's SoberRide® program has provided 65,385 free cab rides home to

would-be drunk drivers in the Greater Washington area.

Sponsors of this year's Holiday SoberRide® offering include: AAA Mid-Atlantic, Anheuser-Busch, Brown-Forman, Constellation Brands, Diageo, District of Columbia Association of Beverage Alcohol Wholesalers, Enterprise Rent-A-Car, Foundation for Advancing Alcohol Responsibility, Giant Food, Glory Days Grill, MillerCoors, Red Top Cab of Arlington, Restaurant Association Metropolitan Washington, Volkswagen Group of America

and the Washington Area New Automobile Dealers Association.

Participating taxicab companies include: Alexandria Yellow Cab; Barwood; Fairfax Yellow Cab; Loudoun Yellow Cab; Northern Virginia Checker Cab; Red Top Cab; Silver Cab of Prince George's County; Yellow Cab of D.C.; and Yellow Cab of Prince William County.

Founded in 1982, the non-profit [501(c)(3)] Washington Regional Alcohol Program (WRAP) is a coalition of diverse interests using effective

education, innovative programs and targeted advocacy to end alcohol-impaired driving and underage drinking in the Washington, D.C. metro area. Through public education, innovative health education programs and advocacy, WRAP is credited with keeping the metro-Washington area's alcohol-related traffic deaths historically lower than the national average.

More information about WRAP's SoberRide® initiative can be found at the website www.soberride.com.

OUT ON THE TOWN

ERIC D. SNIDER'S
IN THE DARK

Movie Review

Hacksaw Ridge

Hacksaw Ridge

Grade: B-

Rated R, sustained sequences of extremely gory and graphic battlefield violence, and for some nonsexual nudity
2 hrs., 11 min

Hacksaw Ridge begins with soldiers being set on fire in slow motion while someone recites Bible-y platitudes in a Southern drawl. In other words, it's a Mel Gibson film, his first opportunity since *Apocalypse*, 10 years ago, to depict stoic men being maimed and killed (which he loves).

It's a true story—not “based on a true story” or “inspired by a true story,” but, according to the onscreen titles, “A TRUE STORY,” without qualifiers—starring Andrew Garfield as a grinning Virginia hillbilly named Desmond T. Doss who joins the Army in World War II, despite being a pacifist and conscientious objector, to serve as a medic.

The second half of the film, in which Desmond's principles are put into action on the battlefield, is harrowing and visceral. Much will be made of Gibson's *Saving Private Ryan*-inspired nightmare of severed limbs and exposed intestines, and those sequences are effectively grotesque. But Gibson also does well with the sweaty, nervous moments in between, with American and Japanese soldiers picking each other off while each side tries frantically to take a hill in Okinawa. Desmond's heroics here—getting wounded men to safety in the midst of a seemingly unwinnable bloodbath—are stirring, and Garfield's performance is earnest.

Unfortunately, before you can see the second half of the movie, you have to get through the corny, melodramatic first half. That's where a young Desmond and his brother (who's barely seen again) engage in a fistfight that their abusive, drunken father (Hugo Weaving) has no objection to until li'l Desmond picks up a brick and



Hacksaw Ridge is the extraordinary true story of Desmond Doss [Andrew Garfield] who, in Okinawa during the bloodiest battle of WWII, saved 75 men without firing or carrying a gun. He was the only American soldier in WWII to fight on the front lines without a weapon, as he believed that while the war was justified, killing was nevertheless wrong. As an army medic, he single-handedly evacuated the wounded from behind enemy lines, braved fire while tending to soldiers and was wounded by a grenade and hit by snipers. Doss was the first conscientious objector to ever earn the Congressional Medal of Honor.

clocks his brother in the head with it. Pointless violence between siblings is fine, but a brick is TOO FAR. Then Dad threatens Desmond with a retaliatory whipping (that'll show him not to hurt others), but Gibson moves into slow motion again, so it's Hugo Weaving saying, in a thick, slow, drawl, “Ahhh'm gonnna haaave to whuuu ya noooooow.” Fortunately, the boys' mother (Rachel Griffiths) intervenes, and she reminds Desmond that the Lord said thou shalt not kill, nor shalt thou hit thy brother with a brick. Thereafter and forever, Desmond Doss is a pacifist.

Fifteen years later, he enlists in the Army and runs into trouble in basic training, where his drill sergeant (Vince Vaughn) isn't as sympathetic to his “I refuse to kill anyone” stance as he anticipated. His fellow soldiers, a real who's who of war movie stereotypes, abuse and taunt him as a coward, trying to make him quit the Army. The movie arbitrarily assigns one, a

guy named Smitty (Luke Bracey), as his primary taunter so that there's someone specific to speak for everyone with an “I misjudged you” speech at the end. Through all the abuse, Desmond remains beatific.

His status as a conscientious objector (he prefers “conscientious supporter”) means he doesn't have to bear arms, but Desmond won't even touch a rifle—not for target practice, not to learn how to disassemble and clean it, not for nothin'. This becomes an issue when he has to pass his rifle training in order to advance. While his religious faith seems genuine (he's Seventh-Day Adventist), this precise refusal to even come into physical contact with a rifle for any reason comes across more persnickety than principled, and court-martialing him over it just prolongs this section of the movie.

But once you get past Hugo Weaving's unintentionally funny performance and Desmond's chaste, perfunctory romance

with a nurse (Teresa Palmer) and the weirdly cartoonish comedy in the barracks (one guy is always naked; another stabs himself in the foot with a knife)—once you get to the actual war, in other words—the movie becomes respectable, serious, even thoughtful in its treatment of war and conscience. As Desmond scrambles around the battlefield, unarmed, to help injured soldiers, the men come to respect him for doing everything he could to serve without violating his beliefs. Like the heroes in *Braveheart* and *The Passion of the Christ*, Pvt. Desmond T. Doss will not forsake his principles. Unlike them, his steadfastness doesn't require martyrdom, which makes his example much more appealing to follow.

And since it's a Mel Gibson movie, there is also a moment where a soldier grabs the top part of a blown-in-half comrade to use as a shield while he runs and fires at the enemy, and you can see the shreds of the dead guy's guts hanging down.

Housing from A3

of its future plans. The roadway is currently undergoing major repair work, allowing for a fresh start to streetscaping in front of the town's businesses. The town hopes to invigorate the business climate along Main Street by helping property owners renovate their downtown commercial spaces and storefronts to allow for new businesses to set up shop. To help these businesses thrive, New Market plans to better connect the Main Street with the rest of the town by refurbishing alleys, filling in sidewalk gaps, and creating a bike and pedestrian network map for the area. Furthermore, New Market wants to add to its park assets by creating a space downtown large enough for concerts, festivals, and other community events, including the celebration of its 225th anniversary, or quasibicentennial, in 2017. The park, in addition to a new Town Hall set to open in the next few years, will help solidify New Market's identity.

Town of Sharpsburg (Washington County)

On September 17, 1862, the farms and valleys surrounding

Sharpsburg became one of the bloodiest battlefields in American history. While the fog of war has lifted since the Battle of Antietam that rattled this town more than 150 years ago, the past plays an especially strong role in the future of this small Washington County town. The historic downtown features several small businesses, including bed and breakfasts and a popular ice cream parlor. Sharpsburg hopes to draw in more bicycle tourism by connecting to the nearby C&O Canal and wants to help businesses by adding more off-street parking. But most of the town's goals are focused on those who live in the community. These goals include attracting a few more businesses to serve Sharpsburg's residents and creating a loan/grant program for homeowners to renovate their homes. They also want to consider the development of a community center, which can provide services for kids and adults alike, as well as a ridesharing program that can make it easier for town residents to get to nearby commercial centers like Hagerstown or to job centers in the Washington, D.C. region.

Town of Vienna (Dorchester County)

With a population of just 271, Vienna is the smallest municipality to be designated a Sustainable Community. But the town's small size does not stop it from having big plans for revitalization. The town was founded in 1706 on the shores of the Nanticoke River, one of the wide streams that enters the Chesapeake Bay from the Eastern Shore. Once bisected by U.S. Highway 50, the road bypassed the town in the 1990s, saving the downtown from traffic but limiting commercial opportunities. Vienna is fortunate enough to own most of the town's shoreline along the Nanticoke, property which is being developed into a park known as Emperor's Landing. The park will help bring in visitors not just by car off of Ocean Gateway, but also by water through a new kayak ramp. Vienna wants to expand their retail portfolio by attracting a few small stores to the town in order to allow locals to shop without heading to other communities and create new jobs for residents. Other goals in the coming years for the town include expanding transit access to Salisbury and Cambridge, repairing

sidewalks to provide safer routes to school, and starting a facade improvement program for local homeowners and businesses.

Town of Williamsport (Washington County)

When Otho Holland Williams settled a town at the site where the Conococheague Creek enters the Potomac River in 1787, he had a grand vision for his future community. Williamsport, as the town would become known, was one of the candidates to be the capital of the United States. The town did not end up becoming a seat of government, but its location along the C&O Canal, now a National Park, helped it to flourish throughout the 19th century. Williamsport plans to undertake streetscape and facade improvements in its historic downtown to make it a welcoming destination for new businesses, as well as add parking to make these shops more easily accessible. The beautification would include trees, bicycle racks, and street furniture such as benches. The town also plans to rehabilitate aging housing stock and add a community center to provide activities for the fast-growing population of the area.

The Edge of Sports

by DAVE ZIRIN

'Africa Has Given Enough of Its People to the Sea'



Imagine hearing that your favorite athlete—LeBron James, Aaron Rodgers, Serena Williams—had drowned after being stuffed in the hull of a ship in order to avoid authorities and cross a treacherous body of water. Their goal in this alternative universe was to flee violence as well as earn enough to support their families.

That is exactly what happened to the goalkeeper for the Gambian national women's soccer team, Fatim Jawara. Jawara was one of many West African first-division players who had chosen this route as a way to escape not only violence but also the abhorrent working conditions and minimal salaries that many soccer players in West Africa have to face. But Jawara is the first to perish in the “Back Way,” as this form of migration to Lampedusa in the south of Italy is known. Jawara had prepared for this trip over the course of several weeks, living in a “camp” in Libya, waiting for the opportunity to make the trek. She is being remembered as not only a dynamic keeper but also a leader in the locker room, and the charismatic centerpiece of a national team that became national heroes when they stunningly qualified for the U-17 World Cup in Azerbaijan back in 2012.

Gambia Football Federation President Lamin Kaba Bajo announced her death at a press conference, where he said:

I received the news today and it has really shocked me.

The young girl is a talent and on the move for greener pastures but the way she died is just shocking and sympathetic. We at the GFF are very sad about the development and on behalf of the Football Federation, I want to send our condolences to the family of the girl and her former club Red Scorpions.

The death of Fatim Jawara highlights a disturbing fact outlined this week in *The New York Times*: Despite media hysteria about the immigration influx into Europe, far fewer people are attempting migration across the Mediterranean in 2016 compared to a year ago. Yet the death toll is higher. This is because there is higher risk, with greater policing of the waters. Fewer boats means fewer people migrating. It also means that, with higher risk of detection, human smugglers are attempting to maximize their profits by packing more people in even less secure boats. Increased crackdowns on migration have also meant that smugglers take riskier routes and charge more. This criminalization of migration and strains on the profiteering of human smuggling cost Fatim Jawara her life. William Spindler, the spokesperson for the United Nations High Commissioner for Refugees said on Tuesday, “This is by far the worst we have ever seen. Smuggling has become big business: It's being done on an almost industrial scale.”

I spoke with Emira Woods, an associate fellow at the Institute for Policy Studies and a board member of Action Aid International. She said, “Gambia is the picture story of economic exploitation, with the entire economy entrenching wealthy elites and the foreign interests they serve. The country's majority are young, unemployed or underemployed. Inequality is growing rapidly, with the rich getting richer and the poor taking to rickety boats to try somehow, somehow, to live a decent life with a livable wage. Climate change has its epicenter in Africa, with countries like The Gambia, on the West Coast of Africa already devastated with rising sea levels, soil erosion, and extreme weather (floods and droughts). The Gambia is 50 percent urban, with most of the population in cities like Banjul, on the coast of the Atlantic where large overpopulated slum areas are disappearing under the rising sea level. Densely populated areas are facing further demands to take in more people who were previously in areas that are now underwater. This horrific death of our sister and daughter Jawara is a powerful reminder that the structures of global capitalism, the devastation of climate change, and the constraints of a repressive political system take their highest toll on women and young people.”

Fatim is one of the over 3,700 refugees who have died in an effort to find some semblance of a better life. It should go without saying that every such death is a tragedy. But if we can focus on one person—perhaps through the universality of sports—maybe we can recognize the humanitarian crisis taking place and not see it as an undifferentiated mass of suffering that we can neither affect nor influence. If you love soccer, you should care about the people who play it. If you care about the people who play it, then you should care about Fatim Jawara and then, hopefully, the people who are dying because of the criminalization of human movement and the profit margins of this lucrative black-market enterprise. Remember Fatim Jawara. As her old coach Choro Mbenga said, “She was bold and stood for her teammates boldly. A talented goalkeeper, she will really be missed.”

She certainly will be missed but she is also tragically

See AFRICA Page A8

Calendar of Events

December 15 — December 21, 2016

Frosty

Date and Time: Friday, December 16, 2016, 10:15 am & 12 noon
Description: The beloved holiday song *Frosty the Snowman* has inspired a brand new musical play filled with enchanting new songs. A young orphan named Billy discovers magic in a stolen hat. When he places the hat on a snowman's head, the snowman comes to life!

But can Frosty the Snowman help Billy find his real family in time for Christmas? Join Billy and Frosty as they embark on a New York City adventure filled with thrills and chills, and the discovery that the real magic of the holidays is love.

Cost: \$8/person; \$6/groups of 20 or more
Ages: Recommended for Grades K-5
Location: Publick Playhouse
 5445 Landover Rd, Cheverly, MD
Contact: 301-277-1710; TTY 301-699-2544

Xtreme Teens: Kickball

Date and Time: Friday, December 16, 2016, 7-10 pm
Description: Teens will compete in a fun and competitive kickball game! Bring a friend, pick a team, and see who will win bragging rights.

Cost: Free with M-NCPPC Youth ID
Ages: 10-17
Location: Rollingcrest-Chillum Community Center
 6120 Sargent Road, Chillum 20782
Contact: 301-853-2005; TTY 301-699-2544

Paper Ornament Workshop

Date and Time: Saturday, December 17, 2016, 2-4 pm
Description: This family-friendly workshop provides the opportunity to create paper ornaments for the Holiday season. All materials are provided. If you have special paper you would like to use, feel free to bring it the day of the event.

We look forward to sharing the holidays with you.

No registration required.

Cost: Free
Ages: All ages welcome
Location: Brentwood Arts Center
 3901 Rhode Island Avenue, Brentwood, MD
Contact: 301-277-2863; TTY 301-699-2544

Hansel & Gretel Tea Party

Date and Time: Saturday, December 17, 2016, 2 pm
Description: Visit Darnall's Chance when it is decorated like a gingerbread house. Guests will listen to the story of *Hansel and Gretel*, enjoy tea and dessert, and participate in a craft activity. Registration fee required for all attendees—children and adults. Capacity is limited; reservation and payment required in advance.

Cost: Resident \$17; Non-Resident \$20
Ages: Children ages 5 & up
Location: Darnall's Chance House Museum
 14800 Governor Oden Bowie Drive,
 Upper Marlboro, MD
Contact: 301-952-8010; TTY 301-699-2544

Soiree at the Snowdens'

Date and Time: Saturday, December 17, 2016, 5-8 pm
Description: The Snowdens were famous far and wide for their hospitality. We honor them with an evening of holiday cheer and merriment, featuring the culinary diversity of our local communities.

Cost: Friends of Montpelier Members:
 \$15; Non-Members: \$20
Ages: 18 & up
Location: Montpelier Mansion/Historic Site
 9650 Muirkirk Road, Laurel, MD
Contact: 301-377-7817; 301-699-2544;
 montpeliermansion@pgparks.com

Prestige Models "Winter Bliss" Fashion Show

Date and Time: Saturday, December 17, 2016, 6-9 pm
Description: It's a night of fabulous fashion! Watch performances from Prestige Models, Strike Force Drum line, Majestic Elites and other model and dance troupes from the DMV area.

Ticket purchase is required. Seating is limited.
Cost: Resident \$5; Non-Resident \$6
Ages: All ages
Location: Marlow Heights Community Center
 2800 St. Clair Drive, Marlow Heights
Contact: 301-423-0505; TTY 301-699-2544

M-NCPPC and Bowie State University presents Bela Dona

Date and Time: Saturday, December 17, 2017, 8 pm
Description: Bela Dona, the exciting and diverse all female band, founded in September 2007, captivates the crowd and propels the power of womanhood to the forefront. Their unique style of Funk, Jazz, R&B and Rock commands audiences and the meshing of the raw talents possessed by these seasoned musicians captivates all who see them perform.

Cost: \$35/person
Ages: All ages
Location: Bowie State University at the
 Fine and Performing Arts Center
 14000 Jericho Park Road, Bowie, Maryland, MD
Contact: 301-446-3232; TTY 301-699-2544

Senior Holiday Concert

Date and Time: Wednesday, December 21, 2016, 10:30-11:30 am
Description: The Senior Holiday Concert will delight you with holiday tunes to get you in the spirit of the season!

Cost: Free
Ages: 60 & better
Location: Laurel-Beltsville Senior Activity Center
 7120 Contee Road, Laurel, MD
Contact: 301-446-3400; TTY 301-699-2544

EARTH TALK ... The Perils of Parking: Round and Round We Go

Dear EarthTalk:

Driving around and around city blocks looking for parking seems like a colossal waste of fuel (and time). Is anyone working on ways to reduce this extra traffic and emissions burden?

— Bernice Mickelson,
New York, NY

It's true that we waste lots of gas and time—and create lots of stress for ourselves—in the constant search for parking spaces. UCLA urban planning professor Donald Shoup and his students observed hundreds of cars driving around four sites in Los Angeles's bustling Westwood Village, a commercial district next to the UCLA campus, and found about one in three drivers was "cruising" in search of a spot. On average, each cruising driver spent only 3.3 minutes on the hunt over about a half-mile in distance—but the numbers add up quickly, given that some 8,000 cars park in Westwood Village each day.

"Over a year, cruising in Westwood Village creates 950,000 excess VMT [vehicle miles traveled]—equivalent to 38 trips around the earth, or four trips to the moon," says Shoup. This excess mileage in just one small business district waste some 47,000 gallons of gasoline while producing 730 tons of CO2 emissions annually. Shoup thinks crowded metro areas should increase the price of

street parking to make it cost as much or more than commercial or private parking garages so as to discourage all this wasteful cruising and force drivers into dedicated parking facilities where they won't slow down other motorists.

Luckily there's a slew of new services that make it easier than ever to park responsibly. BestParking, Parking Panda, Parker, ParkWhiz and ParkMe each provide users with access to hundreds of garages and lots in major cities across the U.S. through easy-to-use Smartphone interfaces. SpotHero works on a similar model but also offers up its own dedicated discounted spots in select parking facilities.

Meanwhile, SpotOn Parking is using San Francisco as a testing ground for its new service connecting drivers with property owners looking to monetize under-utilized parking spots. Users of the free SpotOn app can search for available spaces nearby—and reserve and pay with the click of a virtual button.

Of course, another way to reduce the need to park is to embrace public transit and ridesharing. If you ride the bus or train—or walk or bike—you won't have to waste time or fuel looking to park. Another way to avoid parking hassles is by using Uber or Lyft, or by joining a car-share service like Zipcar which provides dedicated parking spots all around town for its vehicles.

At the meta level, American cities could follow the lead of



CREDIT: CHRIS CHABOT, FLICKRCC

SpotOn Parking is trying to help parking spot owners and drivers connect to reduce "cruising" and ease congestion on the crowded streets of San Francisco.

some of their forward-thinking European counterparts like Antwerp and Zurich which have significantly reduced the overall number of (private and public) parking spaces available, in turn leading to a measurable downturn in vehicle miles travelled within city limits. If people have nowhere to park, they won't bother driving their own car into the city.

While encouraging people to use public transit, car sharing or at least parking apps is a step in the right direction, policy changes that reduce the number of spots altogether might be our best bet in reducing gas consumption, carbon emissions and the waste of time we all experience hunting for that next parking spot.

CONTACTS: BestParking, www.bestparking.com; ParkWhiz, www.parkwhiz.com; Parker, www.theparkerapp.com; Panda Parking, www.parkingpanda.com; ParkMe, www.parkme.com; SpotHero, www.spothero.com; SpotOn Parking, www.spotonparking.com; "Europe's Parking U-Turn: From Accommodation to Regulation," www.itdp.org/europes-parking-u-turn-from-accommodation-to-regulation/; Donald Shoup's "Cruising for Parking," <http://shoup.bol.ucla.edu/CruisingForParkingAccess.pdf>

EarthTalk® is written and edited by Roddy Scheer and Doug Moss and is a registered trademark of **E - The Environmental Magazine** (www.emagazine.com). Send questions to: earthtalk@emagazine.com.

Maryland Casinos Generate \$92 Million in Revenue During November

By PRESS OFFICER
MLGCA

BALTIMORE, MD—Maryland Lottery and Gaming today announced November 2016 revenue numbers for the state's five casinos—Hollywood Casino Perryville in Cecil County, Horseshoe Casino Baltimore in Baltimore City, Casino at Ocean Downs in Worcester County, Maryland Live Casino in Anne Arundel County, and Rocky Gap Casino Resort in Allegany County. November 2016's combined statewide revenue totaled \$91,969,393, an increase of 2.5% from November 2015.

Casino contributions to the state go to the Maryland Education Trust Fund and also support small-, minority- and women-owned businesses, local impact grants and the state's horse racing industry.

Hollywood Casino Perryville generated \$5,642,941 from both slot machines and

table games in November. Gross gaming revenue per unit per day was: \$183.89 for slot machines, \$2,430.59 for banked table games and \$324.32 for non-banked table games. Hollywood Casino's November 2016 revenue decreased by \$419,473, or 6.9%, from November 2015. Hollywood Casino Perryville operates 850 slot machines and 20 (12 banked and eight non-banked) table games.

Horseshoe Casino Baltimore generated \$28,503,083 from both slot machines and table games in November. Gross gaming revenue per unit per day was: \$255.42 for slot machines, \$2,377.74 for banked table games and \$840.14 for non-banked table games. Horseshoe Casino's November 2016 revenue increased by \$3,917,505, or 15.9%, from November 2015. Horseshoe Casino Baltimore operates 2,202 slot machines and 179 (154 banked and 25 non-banked) table games.

Maryland Live Casino generated \$50,247,300 from both slot machines and table games in November. Gross gaming revenue per unit per day was: \$259.58 for slot machines, \$3,755.72 for banked table games and \$1,259.82 for non-banked table games. Maryland Live's November 2016 revenue decreased by \$1,407,953, or 2.7%, from November 2015. Maryland Live Casino operates 3,952 slot machines and 207 (155 banked and 52 non-banked) table games.

Casino at Ocean Downs generated \$3,789,848 from slot machines in November, and its gross gaming revenue per unit per day was \$158.12. Casino at Ocean Downs' November 2016 revenue decreased by \$66,408, or 1.7%, from November 2015. The Casino at Ocean Downs operates 798 slot machines and does not have table games.

Rocky Gap Casino Resort generated \$3,786,222 from both slot machines and table games in November. Gross gaming revenue per unit per day was: \$165.31 for slot machines and \$1,247.42 for banked table games. This facility does not have non-banked table games.

Rocky Gap Casino Resort's November 2016 revenue increased by \$200,263, or 5.6%, from November 2015. Rocky Gap Casino Resort operates 634 slot machines and 17 table games.

In a year-to-year comparison, November 2016 casino revenue increased from November 2015 by \$2,223,993, or 2.5%. See attached document (or click HERE) for a detailed breakdown of November 2016's fund disbursement, fiscal year-to-date totals for the individual casinos and combined state total.

Maryland Lottery and Gaming is responsible for oversight of the state's casinos. In this role, the agency provides direction and guidance to its casino partners on financial, security, regulatory and licensing procedures for the facilities. To keep Marylanders informed and to maintain transparency of casino operations, monthly financial reports are posted on gaming.mdlottery.com. Maryland Lottery and Gaming reminds players to play responsibly and within their budget; resources are available at mdgamblinghelp.org or by calling 1-800-GAMBLER.

IT'S LEAF SEASON

If you prefer to clean your lawn and garden (and get a little exercise) by raking leaves, here are a few ways to make the task easier.

- ▶ Wait until after peak foliage to start raking leaves;
- ▶ Use a sturdy rake with wide tines that bend; this will make it easier for you to get more leaves per sweep;
- ▶ Consider purchasing an ergonomic rake that helps take pressure off your back and shoulders;
- ▶ Move your feet and legs as you bend and twist to help prevent injuries; and
- ▶ Remember to place your yard trim/waste in heavy-duty paper bags, or heavy-duty trash cans with handles and a secure lid clearly labeled "Yard Waste" or "Yard Trim" to ensure collection.

Prince George's County Solid Waste is an initiative of the Department of the Environment, Recreation and Parks, and Office of Waste Services to promote cost savings and sustainability in our everyday behavior.